

2008 IN NUMBERS



CONTENTS

Profile	2
Shareholders structure as at 31 December 2008	3
Structure of the Unipetrol Group	4
Financial data	5
Financial indicators 2004–2008	6
Segmental financial data 2006–2008	7
Income statement 2004–2008	8
Balance sheet 2004–2008	10
Statements of cash flow 2004–2008	14
Capital expenditure 2004–2008	18
Main investment projects in 2008	19
Operating data	24
Operating data 2004–2008	25
Volume sales 2005–2008	26

Employees	27
Market data	28
Retail stations in the Czech Republic	29
Model refining margin	30
Brent crude oil price	31
Differential Brent-Ural	32
Petrochemical spreads	33
Macroeconomic data 2004–2009	35
Excise tax and import duties	36
Quality standards	37
Annex	38
Conversion table	39
Financial calendar 2009	40

PROFILE

The Unipetrol Group operates refineries and petrochemical production facilities and sells and distributes fuels in the Czech Republic and the Central European region. The Group companies focus primarily on the production and sale of refinery products, chemical and petrochemical products, polymers, fertilizers, and specialty chemicals. The Group also operates its own transport services and finances in-house research and development. Unipetrol is the leading refinery and petrochemical group in the Czech Republic and a major player in Central and Eastern Europe; since 2005 it has been part of Central Europe's largest refining and petrochemical group, PKN Orlen.

The Group's major companies in 2008 were the following subsidiaries:

As at 31 December 2008

UNIPETROL RPA, s.r.o.

BENZINA, s.r.o.

PARAMO, a.s.

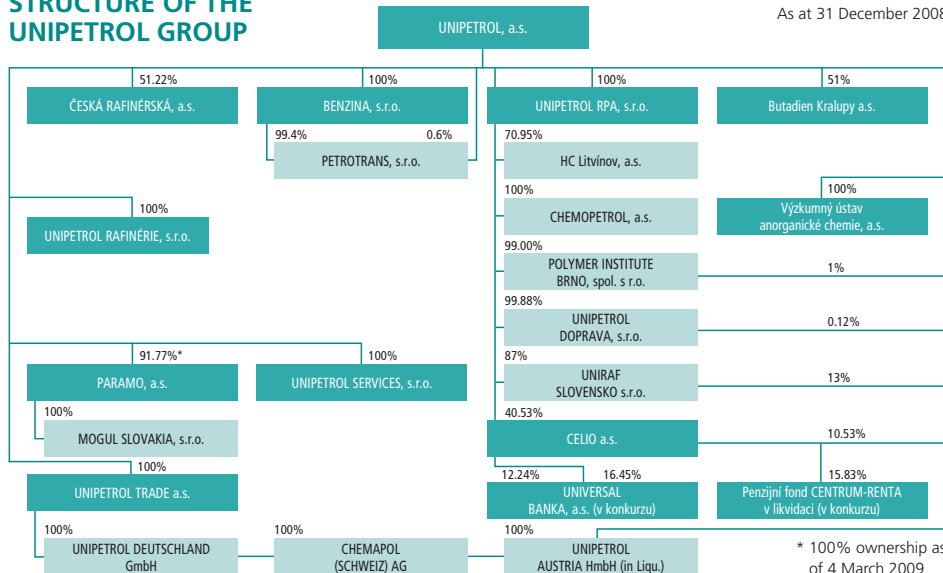
ČESKÁ RAFINÉRSKÁ, a.s.

SHAREHOLDERS STRUCTURE AS AT 31 DECEMBER 2008

	Number of shares	% of issued shares
PKN ORLEN S.A.	114,226,499	62.99%
Others	67,108,265	37.01%
Total	181,334,764	100.00%

STRUCTURE OF THE UNIPETROL GROUP

As at 31 December 2008



FINANCIAL DATA

FINANCIAL INDICATORS 2004–2008

(in thousands of Czech crowns)	2008	2007	2006	2005	2004
Revenues	98,143,951	88,462,174	93,698,270	80,946,337	71,097,589
EBITDA	4,480,503	8,297,652	7,825,742	9,507,838	11,919,030
EBIT	1,002,619	4,812,047	3,779,929	5,281,774	5,846,248
Net profit attributable to the parent company's shareholders	64,530	1,210,010	1,599,827	3,409,815	3,639,453
Net debt ¹⁾	3,253,474	1,562,342	4,937,186	11,936,721	17,276,066
Gearing ²⁾	8.36%	3.71%	12.00%	30.07%	51.69%
EBITDA per share	24.71	45.76	43.16	52.43	65.73
EBIT per share	5.53	26.54	20.85	29.13	32.24
CF from operations per share	23.23	22.19	40.74	39.64	41.61
EPS	0.36	6.67	8.82	18.92	20.07
DPS ³⁾	17.65	--	--	--	--
Number of issued pieces of shares	181,334,764	181,334,764	181,334,764	181,334,764	181,334,764
EBITDA margin	4.57%	9.38%	8.35%	11.75%	16.76%
EBIT margin	1.02%	5.44%	4.03%	6.53%	8.22%
ROACE ⁴⁾	1.81%	8.37%	6.23%	7.77%	8.76%

¹⁾ Net debt = short and long-term interest-bearing debt – (cash and cash equivalents)

²⁾ Gearing = net debt/total equity

³⁾ DPS – paid out in the year (from last year profit or retained earnings)

⁴⁾ ROACE (return on average capital employed) = EBIT after actual tax rate/capital employed (shareholders' equity + net debt)

SEGMENTAL FINANCIAL DATA 2006–2008

(in thousands of Czech crowns)	Refining			Petrochemical		
	2008	2007	2006	2008	2007	2006
Revenues	72,590,116	69,457,121	77,439,083	34,887,598	40,709,814	55,887,964
EBITDA	1,057,903	1,815,337	1,861,081	2,262,401	5,485,353	5,820,406
EBIT	13,250	946,722	1,025,233	358,760	3,347,529	3,089,145

(in thousands of Czech crowns)	Retail			Other and Eliminations		
	2008	2007	2006	2008	2007	2006
Revenues	10,003,909	8,817,674	7,658,097	(19,337,672)	(30,522,435)	(47,286,874)
EBITDA	774,059	845,504	707,292	386,140	164,963	(563,037)
EBIT	454,939	523,965	373,271	175,670	7,336	(707,720)

INCOME STATEMENT 2004–2008

(in thousands of Czech crowns)	2008	2007	2006	2005	2004
Revenues	98,143,951	88,462,174	93,698,270	80,946,337	71,097,589
Cost of sales	(93,470,658)	(78,121,286)	(82,974,055)	(70,661,101)	(60,948,100)
Gross profit	4,673,293	10,340,888	10,724,215	10,285,236	10,149,489
Other income	938,472	908,644	1,430,411	954,603	844,264
Distribution expenses	(2,274,478)	(2,914,419)	(3,234,455)	(2,976,608)	(2,342,483)
Administrative expenses	(1,662,195)	(1,926,301)	(2,130,579)	(2,085,252)	(1,984,462)
Other expenses	(672,473)	1,596,765	(3,009,663)	(896,205)	(820,560)
Operating profit before finance costs	1,002,619	4,812,047	3,779,929	5,281,774	5,846,248
Finance income	222,823	261,023	523,983	106,580	410,374
Finance expenses	(1,204,305)	(3,156,943)	(1,114,248)	(1,044,129)	(1,399,847)
Net finance costs	(981,482)	(2,895,920)	(590,265)	(937,549)	(989,473)
Share of profit of equity accounted investees	--	--	--	(40,534)	63,676
Profit before tax	21,137	1,916,127	3,189,664	4,303,691	4,920,451

(in thousands of Czech crowns)	2008	2007	2006	2005	2004
Income tax expense	44,554	(649,821)	(1,496,389)	(893,876)	(1,210,723)
Profit for the period	65,691	1,266,306	1,693,275	3,409,815	3,709,728
Attributable to:					
Equity holders of the Company	64,530	1,210,010	1,599,827	3,431,277	3,639,453
Minority interest	1,161	56,296	93,448	(21,462)	70,275
Profit for the period	65,691	1,266,306	1,693,275	3,409,815	3,709,728
Basic and diluted earnings per share (in CZK)	0.36	6.67	8.82	18.92	20.07

BALANCE SHEET 2004–2008

(in thousands of Czech crowns)

ASSETS	2008	as restated	as restated	as restated	as restated
		2007	2006	2005	2004
Non-current assets					
Property, plant and equipment	36,667,494	35,802,089	34,096,547	42,919,439	44,246,751
Investment property	160,057	162,955	--	341,141	347,432
Intangible assets	1,567,691	1,689,870	1,656,404	1,744,952	1,849,079
Goodwill	51,595	51,595	--	--	1,513,548
Investments in associates	--	--	--	--	2,380,567
Other investments	203,640	205,904	3,710,018	3,786,255	251,371
Non-current receivables	145,111	115,820	202,398	130,007	215,870
Derivative financial instruments	76,991	--	45,045	16,753	--
Deferred tax asset	17,399	23,924	70,895	51,044	81,615
Total non-current assets	38,889,978	38,052,157	39,781,307	48,989,591	47,859,137

(in thousands of Czech crowns)

ASSETS	2008	as restated	as restated	as restated	as restated
		2007	2006	2005	2004
Current assets					
Inventories	7,211,638	10,322,528	7,872,513	10,825,958	8,830,907
Trade receivables	10,188,530	13,010,664	11,589,306	12,324,194	12,176,554
Prepayments and other current assets	435,464	178,178	825,551	579,191	591,057
Loans granted	300,031	--	--	--	--
Derivative financial instruments	72,172	1,315	6,847	7,633	11,121
Income tax receivable	567,722	160,405	173,850	134,772	16,929
Cash and cash equivalents	952,207	3,084,285	4,329,852	3,501,967	2,657,890
Assets classified as held for sale	78,333	1,261,333	7,327,762	78,334	--
Total current assets	19,806,097	28,018,708	32,125,681	27,452,049	24,284,458
Total assets	58,696,075	66,070,865	71,906,988	76,441,640	72,143,595

(in thousands of Czech crowns)

EQUITY AND LIABILITIES	2008	2007	2006	2005	2004
Equity					
Share capital	18,133,476	18,133,476	18,133,476	18,133,476	18,133,476
Statutory reserves	2,173,616	2,042,971	1,759,163	1,554,972	1,389,867
Other reserves	35,864	16,875	(11,848)	(23,620)	43,081
Retained earnings	18,359,613	21,623,146	20,695,309	19,323,215	13,345,509
Total equity attributable to equity holders of the Company	38,702,569	41,842,141	40,576,100	38,988,043	32,825,771
Minority interests	210,271	295,928	584,094	707,587	595,760
Total equity	38,912,840	42,112,396	41,160,194	39,695,630	33,421,531
Non-current liabilities					
Loans and borrowings	2,084,000	2,156,000	4,472,547	8,769,489	9,938,876
Deferred tax liability	2,131,330	2,271,998	2,627,520	2,847,619	2,303,309
Provisions	357,756	422,044	531,228	811,474	642,739
Finance lease liability	36,356	121,531	203,892	279,470	404,490
Derivative financial instruments	--	--	4,583	13,962	33,377
Other non-current liabilities	220,089	219,317	220,163	232,543	317,009
Total non-current liabilities	4,829,531	5,190,890	8,059,933	12,954,557	13,639,800

(in thousands of Czech crowns)

EQUITY AND LIABILITIES	2008	2007	2006	2005	2004
Current liabilities					
Trade and other payables and accruals	12,614,119	16,112,509	15,817,944	16,995,591	14,842,523
Current portion of loans and borrowings	243,176	1,447,757	4,093,907	3,465,890	3,668,126
Short-term bank loans	1,749,553	804,531	374,686	2,795,710	5,773,425
Current portion of finance lease liabilities	92,596	116,808	122,006	128,129	149,039
Derivative financial instruments	--	13,712	4,766	12,495	29,576
Provisions	205,905	237,143	149,705	226,461	134,594
Income tax payable	48,355	35,119	706,131	167,177	484,981
Liabilities classified as held for sale	--	--	1,417,716	--	--
Total current liabilities	14,953,704	18,767,579	22,686,861	23,791,453	25,082,264
Total liabilities	19,783,235	23,958,469	30,746,794	36,746,010	38,722,064
Total equity and liabilities	58,696,075	66,070,865	71,906,988	76,441,640	72,143,595

STATEMENTS OF CASH FLOW 2004–2008

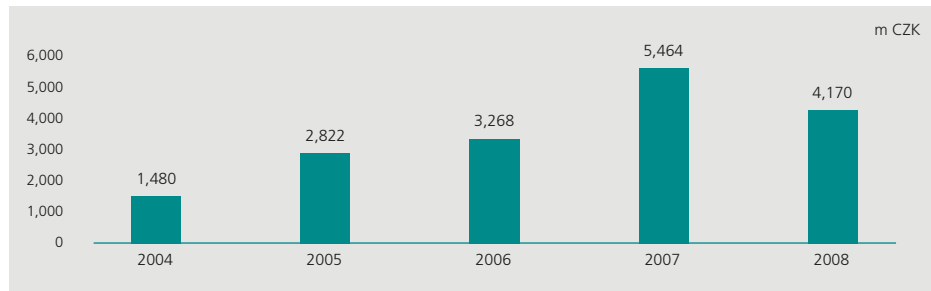
(in thousands of Czech crowns)	2008	as restated	as restated	as restated	as restated
		2007	2006	2005	2004
Profit for the period	65,691	1,266,306	1,693,275	3,428,573	3,639,453
Depreciation and amortisation of the property, plant and equipment and intangible assets	3,477,884	3,485,605	4,045,813	4,226,064	6,072,782
Amortisation of goodwill	--	--	--	--	(216,978)
Gain on disposals of property, plant and equipment and intangible assets	(194,403)	(225,185)	(490,995)	(574,462)	40,963
(Gain)/loss on disposals of subsidiaries	(252)	61,511	253,977	(2,211)	(3,127)
Group share of profit of equity accounted investees	--	--	--	40,534	(63,676)
Interest expense	195,214	253,269	566,821	735,799	1,175,260
Dividends income	(13,587)	(11,395)	(10,846)	(4,081)	--
(Reversal of) impairment losses on financial investments, property, inventory, receivables	312,084	9,476	(138,051)	154,908	(1,293,757)
Other non cash transaction	(147,954)	(42,387)	11,071	--	(38,213)
Income tax expense	(44,554)	960,448	1,496,387	893,876	1,210,723

(in thousands of Czech crowns)	2008	as restated	as restated	as restated	as restated
		2007	2006	2005	2004
Foreign exchange gains	(5,757)	(49,097)	(273,236)	(56,322)	(230,506)
Impairment losses on assets classified as held for sale	--	2,470,948	1,669,916	--	(284,590)
Operating profit before working capital changes	3,644,366	8,179,499	8,824,132	8,842,678	10,008,334
Change in trade and other receivables, prepayments and other current assets	5,745,409	(2,911,660)	(545,836)	(2,107,665)	(3,265,238)
Change in trade and other accounts payable and accruals	(4,242,542)	792,892	532,897	1,657,013	2,113,727
Change in provisions	(98,685)	(15,502)	(76,788)	276,569	--
Interest paid	(366,954)	(633,849)	(505,851)	(716,314)	(1,247,964)
Income tax paid	(468,531)	(1,388,242)	(841,486)	(763,586)	(63,917)
Net cash provided by operating activities	4,213,063	4,023,138	7,387,068	7,188,695	7,544,942
Cash flows from investing activities:					
Acquisition of property, plant and equipment and intangible assets	(4,170,338)	(5,463,835)	(3,267,600)	(2,822,326)	(1,479,528)

(in thousands of Czech crowns)	2008	as restated	as restated	as restated	as restated
		2007	2006	2005	2004
Acquisition of additional shareholding in subsidiary	(47,403)	(334,848)	--	--	--
Decrease of cash relating to disposal of subsidiaries	--	(1,298,725)	(70,612)	--	(41,095)
Purchase of financial investments	(290,876)	--	(3,603)	--	(2,000)
Proceed from disposals of property, plant and equipment and intangible assets	164,104	278,646	641,004	908,875	349,907
Proceed from disposals of subsidiaries	252	5,513,625	971,544	871	129
Proceed from disposals Aliachem and Agrobohemie	1,183,000	--	--	--	--
Dividends received	13,587	--	10,846	4,081	12,966
Net cash provided by investing activities	(3,147,674)	(1,305,137)	(1,718,421)	(1,908,499)	(1,159,621)
Cash flows from financing activities:					
Change in short-term bank loans	(1,186,622)	(2,221,503)	(121,730)	(3,200,861)	(5,816,430)
Change in loans and borrowings	1,141,184	(2,357,829)	(4,078,234)	(1,235,258)	(874,169)
Change in other non-current liabilities	--	--	--	--	11,782
Dividends paid	(3,152,029)	--	--	--	--
Net cash used in financing activities	(3,197,467)	(4,579,332)	(4,199,964)	(4,436,119)	(6,678,817)

(in thousands of Czech crowns)	2008	as restated	as restated	as restated	as restated
		2007	2006	2005	2004
Net change in cash and cash equivalents	(2,132,078)	(1,861,331)	1,468,683	844,077	(293,496)
Cash and cash equivalents at the beginning of period	3,084,285	4,945,616	3,501,967	2,657,890	2,951,386
Cash and cash equivalents related to assets classified as held for sale	--	640,798	--	--	--
Cash and cash equivalents at the beginning of period in balance sheet	3,084,285	4,329,852	3,501,967	2,657,890	2,951,386
Cash and cash equivalents at the end of period	952,207	3,084,285	4,970,650	3,501,967	2,657,890
Cash and cash equivalents related to assets held for sale at the end of period	--	--	640,798	--	--
Cash and cash equivalents at the end of period in balance sheet	952,207	3,084,285	4,329,852	3,501,967	2,657,890

CAPITAL EXPENDITURE 2004–2008



Note: CAPEX from Cash Flow Statement (IFRS)

MAIN INVESTMENT PROJECTS IN 2008

UNIPETROL RPA, s.r.o.

Capital expenditure in CZK million

Name of investment	Purchasing price	Invested in 2007 and earlier	Invested in 2008	Rate of completion (%)	Location	Financing method
Extractive benzene distillation and C5 fraction residue processing	450	191	234	100	local	own resources
Revamp of the convection section of the BA-106 pyrolysis furnace	130	92	33	100	local	own resources
Revamp of the BA-109 convection furnace	120	14	102	100	local	own resources
Retrofit of the DA-251 washing column at the steam cracker	50	0	49	100	local	own resources
Burning of sludge from the biological waste water treatment plant	390	372	22	97	local	own resources
Increase of polypropylene production to 275 kt/y	940	114	642	80	local	own resources
Increasing the capacity of the steam cracker	577	355	89	78	local	own resources
Refurbishment of the 235 cooling tower (T 200)	138	0	90	66	local	own resources

PARAMO, a.s.

Capital expenditure in CZK million

Name of investment	Purchasing price	Invested in 2007 and earlier	Invested in 2008	Rate of completion (%)	Location	Financing method
Retrfit of VR10 and VR21 storage tanks	37	0	33	100	local	own resources
Noise-proofing of production facilities	29	1	26	100	local	own resources
Production of hydrogenated white spirit	25	0	25	100	local	own resources
Intensification of HOSD-PS41- stage 1 (hydrogen compressor)	50	0	21	48	local	own resources

ČESKÁ RAFINÉRSKÁ, a.s.

Capital expenditure in CZK million

Name of investment	Purchasing price	Invested in 2007 and earlier	Invested in 2008	Rate of completion (%)	Location	Financing method
Modernisation of FCC's LPG section – phase 1	456	7	104	24	local	own resources
VBU recontacting and debottlenecking of the MEA system	291	182	56	100	local	own resources
Modification of the fire prevention system – Jiřetín loading area	218	97	97	100	local	own resources
Steam cracker feedstock unloading	146	3	103	75	local	own resources
Kralupy loading area modernisation	141	2	84	61	local	own resources
Slurry oil filtration	138	0	4	3	local	own resources
Transfer of electricity generators from FAR 7	131	3	60	48	local	own resources
Refurbishment of the cooling water piping system – phase 1	103	62	43	100	local	own resources
Increasing the energy efficiency – phase 1	101	98	5	100	local	own resources

BUTADIEN, a.s.

Capital expenditure in CZK million

Name of investment	Purchasing price	Invested in 2007 and earlier	Invested in 2008	Rate of completion (%)	Location	Financing method
New Butadien 120 kt	1,231	120	413	43	local	own resources

BENZINA, s.r.o.

Capital expenditure in CZK million

Name of investment	Purchasing price	Invested in 2007 and earlier	Invested in 2008	Rate of completion (%)	Location	Financing method
Redesign and retrofit of the BENZINA fuel filling stations	277	0	252	100	local	own resources
Construction of a new filling station – Osice	34	1	32	100	local	own resources
Replacement of the cash registers/ card system	169	0	35	23	local	own resources

UNIPETROL DOPRAVA, s.r.o.

Capital expenditure in CZK million

Name of investment	Purchasing price	Invested in 2007 and earlier	Invested in 2008	Rate of completion (%)	Location	Financing method
Retrofit of the signalling system – interlock 9, Litvínov	126	104	21	100	local	own resources
ZAES rail tanker refurbishment	41	0	40	100	local	own resources
Purchase of a class 753 track locomotive	31	0	31	100	local	own resources
Purchase of a class 724 industrial locomotive	22	4	18	100	local	own resources
Re-motoring and upgrade of a class 740 industrial locomotive to class 724.6	21	0	21	100	local	own resources
Purchase and retrofit of class 121 electric locomotives	15	0	15	100	local	own resources

OPERATING DATA

OPERATING DATA 2004–2008

kt	2008	2007	2006	2005
Refinery products sales ¹⁾	2,940	3,123	2,818	3,025
Petrochemical sales ¹⁾	1,872	1,660	1,480	1,560
Retail sales ¹⁾	501	498	443	368
Processed crude	4,533	4,137	4,281	4,152
Utilization ratio	84%	75%	77%	75%
Light distillates yield ²⁾	33%	31%	32%	30%
Middle distillates yield ³⁾	46%	43%	40%	38%
Heavy distillates yield ⁴⁾	10%	10%	11%	14%
Unipetrol total refining capacity	5,550	5,550	5,550	5,540

¹⁾ Sales outside Unipetrol Group

²⁾ LPG, petrol, naphtha

³⁾ JET, diesel

⁴⁾ Fuel oils, bitumen

VOLUME SALES 2005–2008

kt

Selected refinery products	2008	2007	2006	2005
Gasoline	664.2	838.6	603.5	608.3
Diesel	1,491.7	1,554.8	1,460.3	1,395.7
JET	88.2	75.6	65.7	68.4
LPG	98.9	86.3	74.6	64.9
Fuel Oils	209.6	195.8	126.0	216.8
Bitumen	255.0	260.6	286.7	243.1
Selected Monomers & Agro	2008	2007	2006	2005
Ethylene	90.9	52.4	51.1	76.1
Propylene	26.9	33.3	21.6	3.8 ¹⁾
Benzene	178.6	41.0	196.3	206.8
Urea	181.7	163.4	170.6	138.3
Ammonia	192.5	175.1	147.4	180.4
Oxo-alcohols	55.7	53.8	51.6	50.3
C4 fraction	165.0	19.7	157.3	156.4
Selected Polyolefins	2008	2007	2006	2005
PE (HDPE)	286.4	264.2	286.8	292.5
PP	195.9	185.2	204.7	205.3

¹⁾ Resale from Česká rafinářská excluded

EMPLOYEES

Annual average FTE staffing levels in the Unipetrol Group

Company	2008	2007	2006	2005
BENZINA, s.r.o.	100	101	119	163
CHEMOPETROL, a.s.	0	0	2,383	2,462
PARAMO, a.s.	771	799	844	879
UNIPETROL DOPRAVA, s.r.o.	488	491	513	514
UNIPETROL, a.s.	32	65	57	44
Unipetrol Trade Group*	28	32	38	38
UNIPETROL RAFINÉRIE, a.s.	0	0	56	54
UNIPETROL RPA, s.r.o.	2,161	2,210	0	0
UNIPETROL SERVICES, s.r.o.	261	199	0	0
PETROTRANS, s.r.o.	230	219	193	188
UNIRAF Slovensko, s.r.o.	6	8	7	3
ČESKÁ RAFINÉRSKÁ, a.s. (51%)	347	352	352	354
KAUČUK **	0	480	929	974
Total	4,424	4,956	5,491	5,673

* Unipetrol Trade Group consisted in 2008 of companies: UNIPETROL TRADE a.s., ALIACHEM VERWALTUNGS, UNIPETROL DEUTSCHLAND, ALIAPHARM, CHEMAPOL SCHWEIZ, UNIPETROL AUSTRIA, UNIPETROL IBERICA

** Part of the Group till 6/2007

MARKET DATA

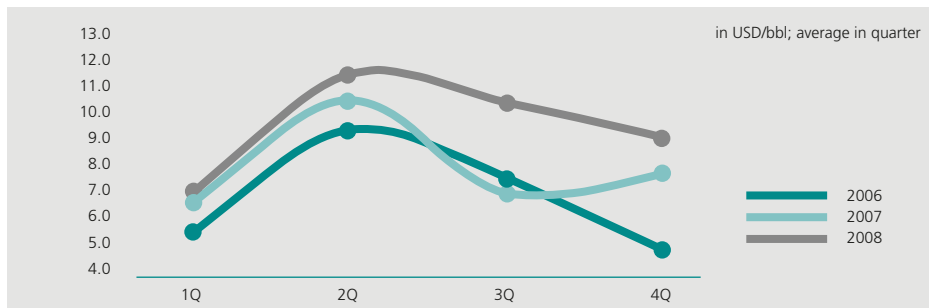
RETAIL STATIONS IN THE CZECH REPUBLIC

	2008	2007	2006	2005	2004
BENZINA	331	320	319	306	306
EURO OIL	192	196	197	193	189
SHELL	172	175	142	142	141
OMV	220	217	217	147	131
ARAL	-	-	-	69	69
AGIP	124	124	79	75	74
JET (CONOCO)	-	-	42	43	53
SLOVNAFT	31	31	32	33	47
ESSO	-	-	45	42	35
Filling stations at supermarkets	63	61	60	49	33
Others	1,467	1,429	1,470	1,440	1,442
Total*	2,600	2,553	2,603	2,539	2,520

* These are public multi-product filling stations with further spectrum of services.

Source: Ministry of Industry and Trade of the Czech Republic

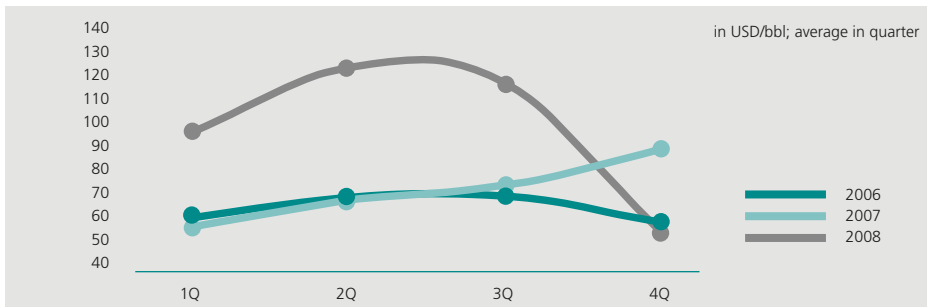
MODEL REFINING MARGIN



USD/bbl	1Q	2Q	3Q	4Q
2006	5.3	9.4	7.5	4.5
2007	6.4	10.7	6.9	7.6
2008	6.8	11.7	10.6	9.1

Calculation methodology: refinery products prices (95.5%) Rotterdam quotation and the refinery setting as the "cracking refinery" vs. Brent Dtd (100%). Products include Premium Unleaded (23.4%), Regular Unleaded (15.5%), Jet/Kerosene (8.3%), Diesel (33.3%), 1% Sulphur Fuel Oil (12.9%), Propane (1.5%), Butane (0.3%), Sulphur (0.4%), Source of all quotations: THOMSON REUTERS.

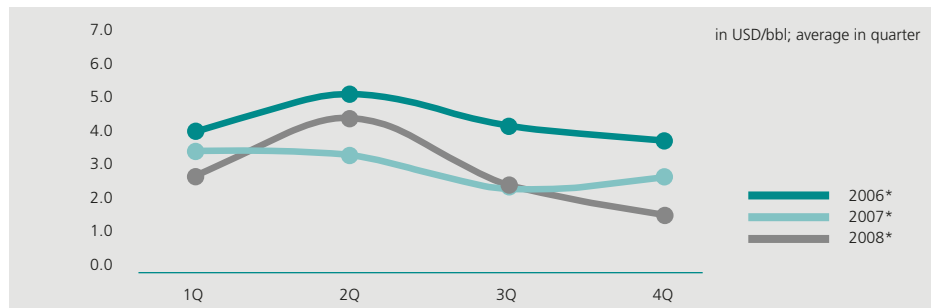
BRENT CRUDE OIL PRICE



USD/b	1Q	2Q	3Q	4Q
2006	61.8	69.6	69.6	59.6
2007	57.8	68.8	74.8	88.5
2008	96.7	121.2	115.1	55.4

Source: THOMSON REUTERS

DIFFERENTIAL BRENT-URAL



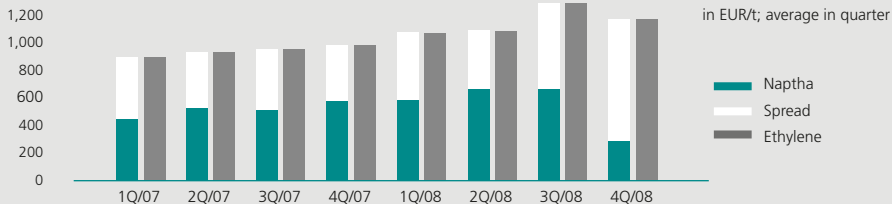
USD/b	1Q	2Q	3Q	4Q
2006*	4.1	5.1	4.2	3.8
2007*	3.6	3.4	2.5	2.8
2008*	2.9	4.4	2.6	1.8

* Based on new methodology: spread fwd Brent Dtd vs Ural Rdam = Med Strip - Ural Rdam (Ural CIF Rotterdam)

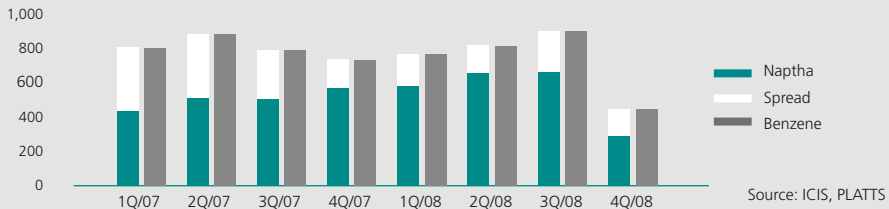
Source: THOMSON REUTERS

PETROCHEMICAL SPREADS

Ethylene

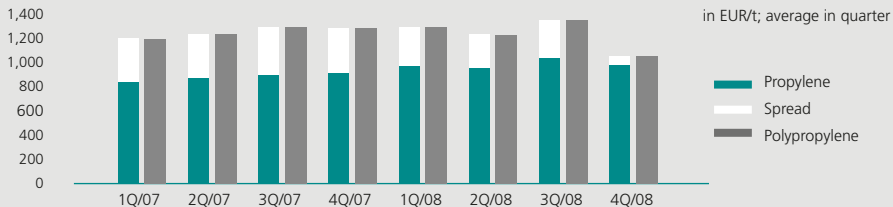


Benzene

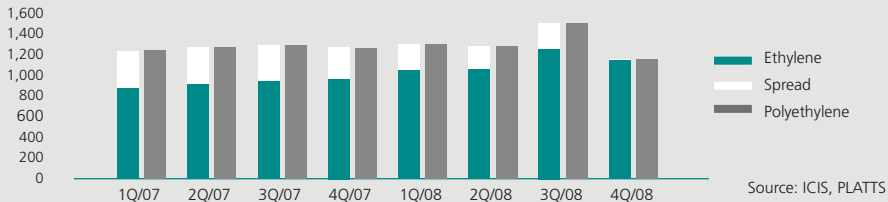


PETROCHEMICAL SPREADS

Polypropylene



Polyethylene



MACROECONOMIC DATA 2004–2009

Czech	2009 ¹⁾	2008	2007	2006	2005	2004
CZK/EUR – period average	26.9	24.9	27.8	28.3	29.8	31.9
CZK/USD – period average	21.0	17.0	20.3	22.6	23.9	25.7
Brent crude Dated – end of period ¹⁾	50.75 ²⁾	36.55	96.02	58.93	57.88	40.47
GDP growth (y/y %)	(2.3)	3.2	6.0	6.8	6.3	4.5
Nominal GDP (bn CZK)	3,692.0	3,705.9	3,530.2	3,215.6	2,983.9	2,814.8
GDP per capita (EUR)	13,200	14,400	12,300	11,100	9,800	8,600
Domestic demand (y/y %)	(0.7)	1.2	5.1	5.4	1.7	3.1
Inflation (y/y %, avrg.)	1.1	6.3	2.8	2.5	1.9	2.6
Unemployment (% , avrg.)	7.6	6.3	6.6	8.1	8.9	9.8

Source: MFCR, PLATTS, THOMSON REUTERS

¹⁾ Forecast

²⁾ THOMSON REUTERS Poll (dated 20 May 2009)

EXCISE TAX AND IMPORT DUTIES

Excise tax in the Czech Republic	EU min.	2008	2007	2006	2005	2004
At the beginning of the year	EUR/1000 l	CZK/1000 l	CZK/1000 l	CZK/1000 l	CZK/1000 l	CZK/1000 l
Gasoline	359	11,840	11,840	11,840	11,840	11,840
Diesel	302	9,950	9,950	9,950	9,950	9,950
JET A-1 – aviation fuel	302	9,950	9,950	9,950	9,950	9,950

Source: European Commission, ASPI (Automated system of legal information)

QUALITY STANDARDS

Gasoline standards		EU	EU
	units	from 2005	from 2009
Sulphur content	mg/kg, max.	50/10	10
Aromatics content	% vol., max.	35	35
Benzene content	% vol., max.	1	1
Olefins content	% vol., max.	18	18

Diesel standards		EU	EU
	units	from 2005	from 2009
Sulphur content	mg/kg, max.	50/10	10
Polyaromatic content	% (m/m), max.	11	11
Cetane number	minimum	51	51

Source: ČSN EN 228 (Gasoline standards), ČSN EN 590 (Diesel standards)

ANNEX

CONVERSION TABLE

Basic data						
1 barrel	=	0.1590	cubic metre	=	159.0	litres
1 m ³	=	6.2898	barrels	=	35.31	cubic feet
Crude oil and products						
1 tonne of crude oil	=	7.4	barrels of crude oil (assuming a specific gravity of 34° American Petroleum Institute – API)			
1 barrel of crude oil per day	=	50	metric tonnes of crude oil per year			
1 tonne of LPG	=	11.6	barrels	=	1.84	m ³
1 tonne of gasoline	=	8.4	barrels	=	1.34	m ³
1 tonne of jet fuel	=	7.9	barrels	=	1.26	m ³
1 tonne of diesel or heating oil	=	7.4	barrels	=	1.18	m ³
1 tonne of fuel oil	=	6.4	barrels	=	1.02	m ³
1 tonne of lubricants	=	7.1	barrels	=	1.13	m ³
1 tonne of bitumen	=	6.2	barrels	=	0.99	m ³
1 tonne of aromatics	=	7.2	barrels	=	1.14	m ³
1 tonne of refined petroleum products	=	7.9	barrels (av.)	=	1.26	m ³

FINANCIAL CALENDAR 2009

Quarterly consolidated results	
1Q 2009	May 14, 2009
2Q 2009	August 27, 2009
3Q 2009	November 13, 2009
Half-year 2009 results	
Semi-annual report	August 27, 2009

Reuters code: UNPEsp.PR
Bloomberg ticker: UNIP CP
ISIN: CZ 0009091500

Legal disclaimer

This document does not constitute an investment advertisement. It is not a recommendation and does not purport to give any advice whatsoever and should not be construed as such. No warranties or representations of any nature are given or made in any respect of the Company to which the information in this document relates or its business or financial affairs. The recipient will need to make her/his own enquiries before taking any action (if any).

CONTACTS

UNIPETROL, a.s.

www.unipetrol.cz
www.unipetrolrpa.cz
www.benzinaplus.cz
www.paramo.cz
www.ceskarafinerska.cz
www.unipetroldoprava.cz
www.unipetroltrade.cz
www.unipetrolservices.cz

Prague Office

Investor Relations Department

phone +420 225 001 417
fax +420 225 001 447
e-mail: ir@unipetrol.cz

Press Office

phone +420 225 001 407
fax +420 225 001 447
e-mail: pr@unipetrol.cz

A large, abstract teal graphic consisting of several overlapping, curved shapes that resemble stylized waves or petals, positioned in the upper half of the page.

www.unipetrol.cz